

**TECHNICAL MANUAL**

**GENERAL SUPPORT MAINTENANCE  
REPAIR PARTS AND SPECIAL TOOLS LISTS**

**FOR  
SIMULATOR, AIRCRAFT DISPLACEMENT AN/ASM-120  
(NSN 6625-00-906-6406)**



**GENERAL SUPPORT MAINTENANCE  
REPAIR PARTS AND SPECIAL TOOLS LISTS  
FOR  
SIMULATOR, AIRCRAFT DISPLACEMENT AN/ASM-120  
(NSN 6625-00-9066406)**

Current as of 22 June 1978

**REPORTING OF ERRORS**

You can improve this manual by recommending improvements using DA Form 2028-2 located in the back of the manual. Simply tear out the self-addressed form, fill it out as shown on the sample, fold it where shown, and drop it in the mail.

If there are no blank DA Form 2028-2 in the back of your manual, use the standard DA Form 2028 (Recommended Changes to Publications and Blank Forms) and forward to the Commander, US Army Communications and Electronics Materiel Readiness Command, ATTN: DRSEL-ME-MQ, Fort Monmouth, New Jersey 07703.

In either case a reply will be furnished direct to you.

Table of Contents

		Page	Illus Figure
SECTION I.	Introduction .....	1	
II.	Repair parts lists .....	5	
Group 00	Simulator, Aircraft Displacement AN/ASM-120 .....	5	1
01	Turntable assembly .....	7	2
	0101 Clutch components .....	10	3
	010101 Gear assembly, detail A.....	13	4
	010102 Gear assembly, detail B.....	15	5
	010103 Gear assembly, detail C.....	17	6
	010104 Gear assembly, detail D.....	19	7
	010105 Gear assembly, detail E.....	21	8
	0102 Dynamic brake assembly.....	22	9
III.	Special tools lists (not applicable)		
IV.	National stock number and part number index.....	23	

\*This manual supersedes TM 11-6625-613-40P, 30 June 1977.

**SECTION I  
INTRODUCTION**

**1. Scope**

This manual lists spares and repair parts; special tools; special test, measurement, and diagnostic equipment (TMDE), and other special support equipment required for performance of direct support and general support maintenance of the AN/ASM-120. It authorizes the requisitioning and issue of spares and repair parts as indicated by the source and maintenance codes.

**2. General**

This Repair Parts and Special Tools List is divided into the following sections:

*a. Section II. Repair Parts List.* A list of spares and repair parts authorized for use in the performance of maintenance. The list also includes parts which must be removed for replacement of the authorized parts. Parts lists are composed of functional groups in numeric sequence, with the parts in each group listed in figure and item number sequence.

*b. Section III. Special Tools List.* Not applicable.

*c. Section IV. National Stock Number and Part Number Index.* A list, in National item identification number (NIIN) sequence, of all National stock numbers (NSN) appearing in the listings, followed by a list, in alphameric sequence, of all part numbers appearing in the listings. National stock numbers and part numbers are cross-referenced to each illustration figure and item number appearance.

**3. Explanation of Columns**

*a. Illustration.* This column is divided as follows:

(1) Figure number. Indicates the figure number of the illustration on which the item is shown.

(2) Item number. The number used to identify item called out in the illustration.

*b. Source, Maintenance, and Recoverability (SMR) Codes.*

(1) Source code. Source codes indicate the manner of acquiring support items for maintenance, repair, or overhaul of end items. Source codes are entered in the first and second positions of the Uniform SMR Code format as follows:

<i>Code</i>	<i>Definition</i>
-------------	-------------------

PA	Item procured and stocked for anticipated or known usage.
----	---

AH—Item to be assembled at the general support maintenance level.

XD—A support item that is not stocked. When required, item will be procured through normal supply channels.

**NOTE**

Cannibalization or salvage may be used as a source of supply for any items source coded above except those coded XA and aircraft support items as restricted by AR 700-42.

(2) *Maintenance code.* Maintenance codes are assigned to indicate the levels of maintenance authorized to USE and REPAIR support items. The maintenance codes are entered in the third and fourth positions of the Uniform SMR Code format as follows:

(a) The maintenance code entered in the third position will indicate the lowest maintenance level authorized to remove, replace, and use the support item. The maintenance code entered in the third position will indicate one of the following levels of maintenance:

<i>Code</i>	<i>Application/Explanation</i>
H	Support item is removed, replaced, used at the general support level.

(b) The maintenance code entered in the fourth position indicates whether the item is to be repaired and identifies the lowest maintenance level with the capability to perform complete repair (i.e.; all authorized maintenance functions). This position will contain one of the following maintenance codes:

<i>Code</i>	<i>Application/Explanation</i>
H	The lowest maintenance level capable of complete repair of the support item is the general support level.
Z	Nonreparable. No repair is authorized.

(3) *Recoverability code.* Recoverability codes are assigned to support items to indicate the disposition action on unserviceable items. The recoverability code is entered in the fifth position of the Uniform SMR Code format as follows:

<i>Recoverability codes</i>	<i>Definition</i>
-----------------------------	-------------------

Z	Nonreparable item. When unserviceable, condemn and dispose at the level indicated in position 3.
H	Reparable item. When uneconomically repairable,

condemn and dispose at the general support level.

*c. National Stock Number.* Indicates the National stock number assigned to the item and will be used for requisitioning purposes.

*d. Part Number.* Indicates the primary number used by the manufacturer (individual, company, firm, corporation, or Government activity), which controls the design and characteristics of the item by means of its engineering drawings, specifications, standards, and inspection requirements to identify an item or range of items.

#### NOTE

**When a stock numbered item is requisitioned, the repair part received may have a different part number than the part being replaced.**

*e. Federal Supply Code for Manufacturer (FSCM).* The FSCM is a 5-digit numeric code listed in SB 70842 which is used to identify the manufacturer, distributor, or Government agency, etc.

*f. Description.* Indicates the Federal item name and, if required, a minimum description to identify the item.

*g. Unit of Measure (UIM).* Indicates the standard of the basic quantity of the listed item as used in performing the actual maintenance function. This measure is expressed by a two-character alphabetical abbreviation (e.g.; ea, in, pr, etc). When the unit of measure differs from the unit of issue, the lowest unit of issue that will satisfy the required units of measure will be requisitioned.

*h. Quantity Incorporated in Unit.* Indicates the quantity of the item used in the breakout shown on the illustration figure, which is prepared for a functional group, subfunctional group, or an assembly.

#### 4. Special Information

- a.* Detailed assembly instructions for items source

coded to be assembled are found in TM 11-625-13-45. Assembly components are listed immediately following the items to be assembled.

*b.* The following publications pertain to the AN/ASM-120 and its components:

TM 11-6625613-12, Simulator, aircraft displacement AN/ASM-120.

TM 11-6625-613-45, Simulator, Aircraft Displacement AN/ASM-120

#### 5. How to Locate Repair Parts

*a.* When National stock number or part number is unknown.

(1) *First.* Using the table of contents, determine the functional group within which the item belongs. This is necessary since illustrations are prepared for functional groups and listings are divided into the same groups.

(2) *Second.* Find the illustration covering the functional group to which the item belongs.

(3) *Third.* Identify the item on the illustration and note the illustration figure and item number of the item.

(4) *Fourth.* Using the Repair Parts Listing, find the figure and item number noted on the illustration.

*b.* When National stock number or part number is known.

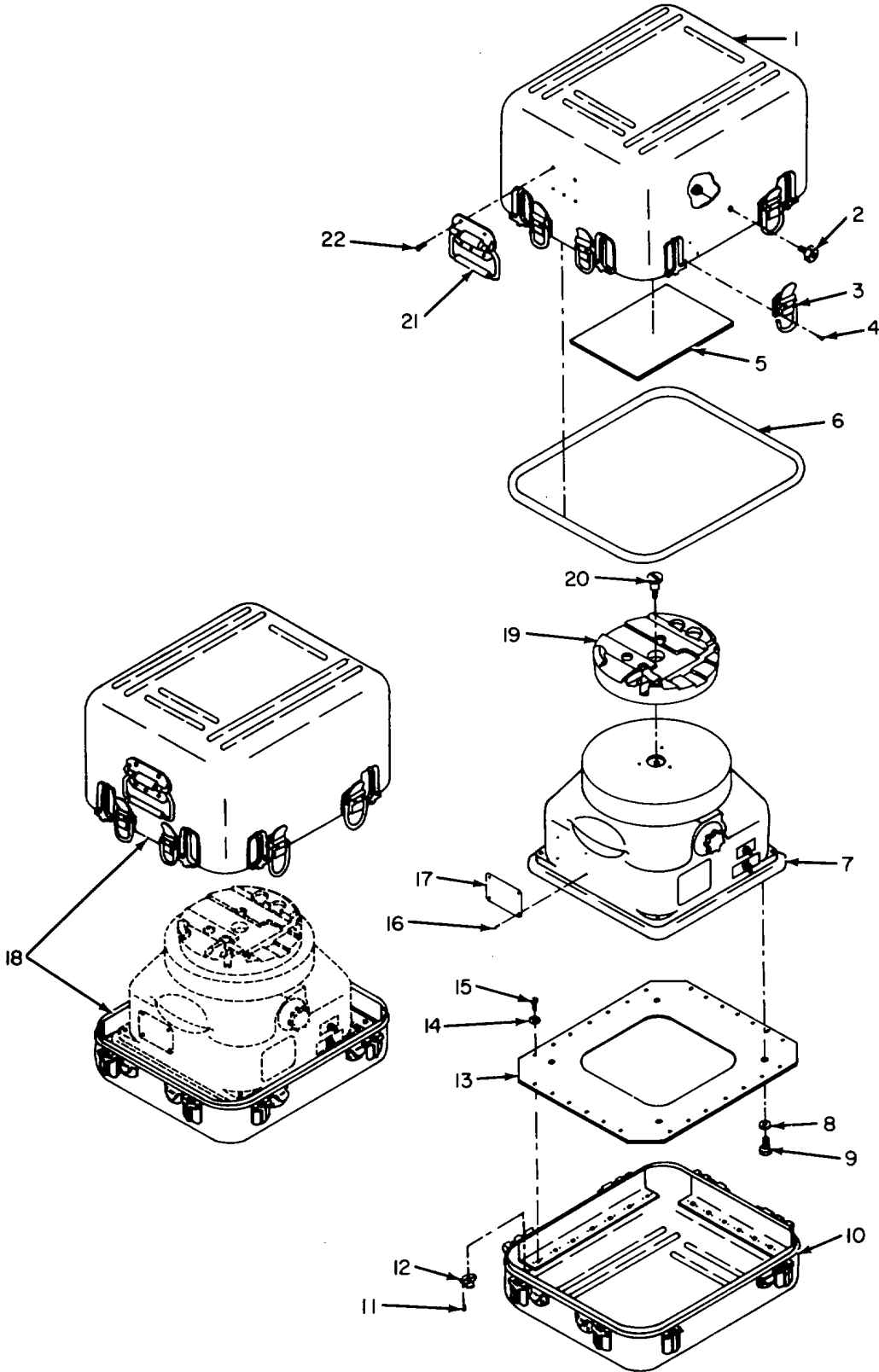
(1) *First.* Using the Index of National Stock Numbers and Part Numbers, find the pertinent National stock number or part number. This index is in NIIN sequence followed by a list of part numbers in alphameric sequence, cross-referenced to the illustration number and item number.

(2) *Second.* After finding the figure and item number, locate the figure and item number in the repair parts list.

#### 6. Abbreviations

Not applicable.

(Next printed page is 4)



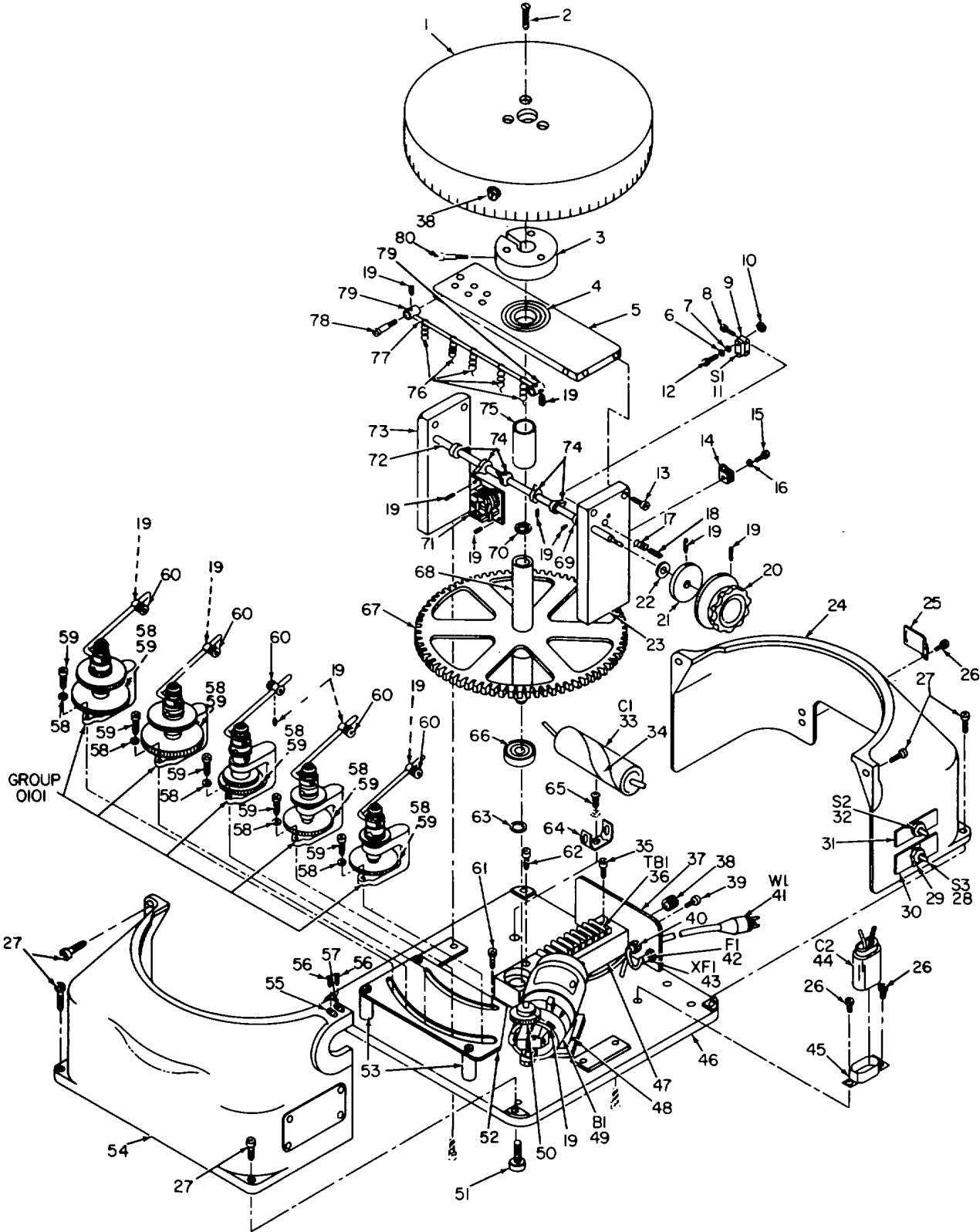
ELOYMOOI

Figure 1. Simulator, Aircraft Displacement AN/ASM-120 Boeing-Vertol P/N 1145988-1.

## SECTION II

TM 11-6625-613-40P

(1) ILLUSTRATION		(2)	(3)	(4)	(5)	(6)	(7)	(8)
(a) FIG NO.	(b) ITEM NO.	SMR CODE	NATIONAL STOCK NUMBER	PART NUMBER	FSCM	DESCRIPTION  UOC	U/M	QTY INC IN UNIT
						GROUP 00 SIMULATOR, AIRCRAFT DISPLACEMENT AN/AS-120 BOEING-VERTOL PIN 1145988-1		
1	1	XDHHH		120H16-1TOP	94637	CASE SUBASSEMBLY, TOP	EA	1
1	2	XDHZZ		120HA-14	94637	VALVE ASSEMBLY	EA	1
1	3	XDHZZ		120H-A-5A	94637	HANDLE	EA	8
1	4	PAHZZ	5320-00-117-6820	MS20470AD3-9	96906	RIVET	EA	24
1	5	XDHZZ		SSE500-5	77272	INSTRUCTIONS, OPERATING	EA	1
1	6	XDHZZ		120H16	94637	GASKET	EA	1
1	7	XDHHH		219775-2	30120	TURNTABLE ASSEMBLY	EA	1
1	8	XDHZZ	5310-00-584-5272	AN935-816	88044	WASHER	EA	4
1	9	XDHZZ		AN8-7A	88044	BOLT	EA	4
1	10	XDHHH		120H16-1BOT	94637	CASE SUBASSEMBLY, BOTTOM	EA	1
1	11	XDHZZ	5320-00-117-6942	RS20426AD3-8	96906	RIVET	EA	54
1	12	XDHZZ		52LHTA521-02	72962	NUTPLATE	EA	27
1	13	XDHZZ		114V3041-2	77272	PLATE, MOUNTING	EA	1
1	14	XDHZZ	5310-00-167-0801	AN960C10	88044	WASHER	EA	1
1	15	PAHZZ	5305-00-050-9232	MS51958-66	96906	SCREW	EA	1
1	16	XDHZZ	5305-00-253-5612	M521318-15	96906	SCREW	EA	4
1	17	XDHZZ		114V3040	77272	PLATE, IDENTIFICATION	EA	1
1	18	XDHHH		120H16-D	94637	CASE ASSEMBLY	EA	1
1	19	PAHZZ	6625-00-906-6407	114V3041-1	77272	ADAPTER, TURNTABLE	EA	1
1	20	PAHZZ	5305-00-880-7730	VS10203-4	77272	SCREW, SHOULDER	EA	1
1	21	XDHZZ		120HA12	94637	HANDLE	EA	2
1	22	XDHZZ	5320-00-754-0992	MS20470AD6-7	96906	RIVET	EA	10



ELOYM002

Figure 2. Turntable Assembly Ideal Aerosmith Incorporated P/N 219775-2.

## SECTION II

TM 11-6625-613-40P

(1) ILLUSTRATION		(2)	(3)	(4)	(5)	(6) DESCRIPTION	(7)	(8)
(a) FIG NO.	(b) ITEM NO.	SMR CODE	NATIONAL STOCK NUMBER	PART NUMBER	FSCM	UOC	U/M	QTY INC IN UNIT
						GROUP 01 TURNTABLE ASSEMBLY IDEAL AEROSMITH INCORPORATED PIN 219775-2		
2	1	XDHZZ		1565NS	30120	TABLE	EA	1
2	2	XDHZZ		M535198-61	96906	SCREW	EA	3
2	3	XDHZZ		219950-1	30120	HUB, TABLE MOUNTING	EA	1
2	4	XDHZZ		KP16A	21737	BEARING, BALL	EA	1
2	5	XDHZZ		219780	30120	PLATE, TOP BEARING	EA	1
2	6	PAHZZ	5310-00-579-5554	AN936A2	88044	WASHER	EA	2
2	7	XDHZZ		AN960-26	88044	WASHER	EA	2
2	8	XDHZZ		NAS608-440-8P	80205	SCREW	EA	2
2	9	XDHZZ		219795	30120	BLOCK, MOUNTING	EA	1
2	10	PAHZZ	5310-00-934-9738	MS35649-222	96906	NUT	EA	2
2	11	PAHZZ	5930-00-646-4619	MS25085-1	96906	SWITCH, SENSITIVE	EA	1
2	12	PAHZZ	5305-00-958-6381	AN515-2-10	88044	SCREW	EA	2
2	13	XDHZZ		NA5608-16P	80205	SCREW	EA	6
2	14	XDHZZ		A510-1-4-4	95987	CLIP	EA	1
2	15	PAHZZ	5305-00-054-6650	MS51957-26	96906	SCREW	EA	1
2	16	PAHZZ	5310-00-167-0816	AN960-6	88044	WASHER	EA	4
2	17	PAHZZ	6625-00-906-6411	219789	30120	SPRING, COMPRESSION	EA	1
2	18	XDHZZ		219788	30120	PIN, SWITCH ACTUATING	EA	1
2	19	PAHZZ	5305-00-728-6308	AN565A1032H3	88044	SETSCREW	EA	14
2	20	XDHZZ		6550S	92218	KNOB, RATE SELECTOR	EA	1
2	21	PAHZZ	6625-00-906-6408	219784	30120	CAM, BRAKE ACTUATING	EA	1
2	22	XDHZZ		211614	30120	DISK, CLUTCH FRICTION	EA	1
2	23	XDHZZ		219778	30120	BAR, SUPPORT, FRONT	EA	1
2	24	XDHZZ		1579NS2	30120	CASE, RIGHT HALF	EA	1
2	25	XDHZZ		221359	30120	CLIP, CABLE	EA	1
2	26	PAHZZ	5305-00-054-6668	MS51957-43	96906	SCREW	EA	4
2	27	XDHZZ		NAS608-4-2P	80205	SCREW, CAP HEAD	EA	4
2	28	PAHZZ	5930-00-224-5245	8381-K8	15605	SWITCH, SENSITIVE	EA	1
2	29	PAHZZ	9905-00-514-7567	1329	72653	PLACARD, ON-OFF	EA	1
2	30	XDHZZ		220136	30120	PLACARD, BRAKE	EA	1
2	31	XDHZZ		211029-1	30120	PLACARD, SWITCH	EA	1
2	32	PAHZZ	5930-00-112-5272	7612-K2	15605	SWITCH, SENSITIVE	EA	1
2	33	PAHZZ	5910-00-906-6394	19F2052	93199	CAPACITOR, FIXED, PAPER	EA	1
2	34	XDHZZ		614A625	93199	PROTECTOR, TERMINAL	EA	1
2	35	XDHZZ		NAS608-632-BP	80205	SCREW	EA	2
2	36	PAHZZ	5940-00-822-4824	8-541	71785	TERMINAL STRIP	EA	1
2	37	XDHZZ		219881	30120	PLATE, VACUUM CONNECTION	EA	1



## SECTION II

TM 11-6625-613-40P

(1) ILLUSTRATION		(2)	(3)	(4)	(5)	(6) DESCRIPTION	(7)	(8)
(a) FIG NO.	(b) ITEM NO.	SMR CODE	NATIONAL STOCK NUMBER	PART NUMBER	FSCM	UOC	U/M	QTY INC IN UNIT
2	38	PAHZZ	5340-00-200-8637	1604-42	97945	PLUG, AIR PASSAGE	EA	2
2	39	XDHZZ		AN520-1R6	88044	SCREW	EA	2
2	40	XDHZZ		SR-7P	28520	RELIEF, STRAIN	EA	1
2	41	PAHZZ	6150-00-071-1180	1714	70903	CABLE, POWER	EA	1
2	42	PAHZZ	5920-00-199-9498	313.500	75915	FUSE	EA	1
2	43	XDHZZ		34200	75915	FUSEHOLDER	EA	1
2	44	XDHZZ		BR 200-450	07793	CAPACITOR, ELECTROLYTIC	EA	1
2	45	PAHZZ	5910-00-735-0899	71987	76149	CLAMP, CAPACITOR	EA	1
2	46	XDHZZ		219776	30102	BASE, TURNTABLE	EA	1
2	47	XDHZZ		219777	30120	MANIFOLD	EA	1
2	48	XDHZZ		NAS608-3-1	80205	SCREW	EA	4
2	49	PAHZZ	3010-00-688-5029	B2710EX30	01827	MOTOR, SYNCHRONOUS	EA	1
2	50	PAHZZ	3020-00-618-9387	211868	30120	GEAR, MOTOR DRIVEN	EA	1
2	51	XDHZZ		211634-1	30120	SCREW, LEVELING	EA	4
2	52	XDHZZ		211632	30120	PLATE, GEAR, MOUNTING	EA	1
2	53	XDHZZ		211631-2	30120	SPACER	EA	4
2	34	XDHZZ		1579N51	30120	CASE, LEFT HALF	EA	1
2	55	XDHZZ		211745	30120	POINTER, TABLE	EA	1
2	56	PAHZZ	5305-00-762-7482	MS35206-202	96906	SCREW	EA	4
2	57	XOHZZ		211193	30120	POINTER, TABLE	EA	1
2	58	PAHZZ	5310-00-167-0818	AN960-10	88044	WASHER	EA	10
2	59	XDHZZ		NAS608-3-IOP	80205	SCREW	EA	10
2	60	XDHZZ		R19787	30120	FOLLOWER, CAN	EA	5
2	61	XDHZZ		NAS608-3-36	80205	SCREW	EA	4
2	62	XDHZZ		NAS608-4-28P	80205	SCREW	EA	3
2	63	PAHZZ	5330-00-24-3840	MS29513-14	96906	PACKING, PREFORMED	EA	1
2	64	XDHZZ		128A2244	93199	CLAMP, CAPACITOR	EA	1
2	65	PAHZZ	5305-00-054-6652	MS53957-28	96906	SCREW	EA	3
2	66	PAHZZ	3110-00-027-4028	KP10A	21335	BEARING, BALL	EA	1
2	67	PAHZZ	3020-00-999-2653	219792	30120	GEAR, BULL	EA	1
2	68	XDHZZ		21978	30120	SHAFT, TURNTABLE	EA	1
2	69	XDHZZ		211627	30120	COLLAR	EA	1
2	70	PAHZZ	5330-00-733-2208	MS29513-112	96906	PACKING, PREFORMED	EA	1
2	71	PAHHH	6625-00-906-6364	219551-1	30120	BRAKE, DYNAMIC	EA	1
2	72	XDHZZ		211626	30120	SHAFT, CAN	EA	1
2	73	XDHZZ		219779	30120	BAR, SUPPORT, REAR	EA	1
2	74	PAHZZ	6625-00-906-6409	219786	30120	CAM, CLUTCH ACTUATING	EA	5
2	75	XDHZZ		219773	30120	SPACER, SLEEVE	EA	1
2	76	PAHZZ	5826-00-912-9980	219793	30120	SPRING, EXTENSION	EA	5
2	77	XDHZZ		211557-3	30120	SHAFT	EA	1

SECTION II

TM 11-6625-613-40P

(1) ILLUSTRATION		(2)	(3)	(4)	(5)	(6)	(7)	(8)
(a) FIG NO.	(b) ITEM NO.	SMR CODE	NATIONAL STOCK NUMBER	PART NUMBER	FSCM	DESCRIPTION  UOC	U/M	QTY INC IN UNIT
2	78	XDHZZ		NAS60B-B32-BP	80205	SCREW	EA	2
2	79	XDHZZ		719790	30120	SUPPORT, SHAFT	EA	2
2	80	XDHZZ		NAS608-5-24P	80205	SCREW	EA	1

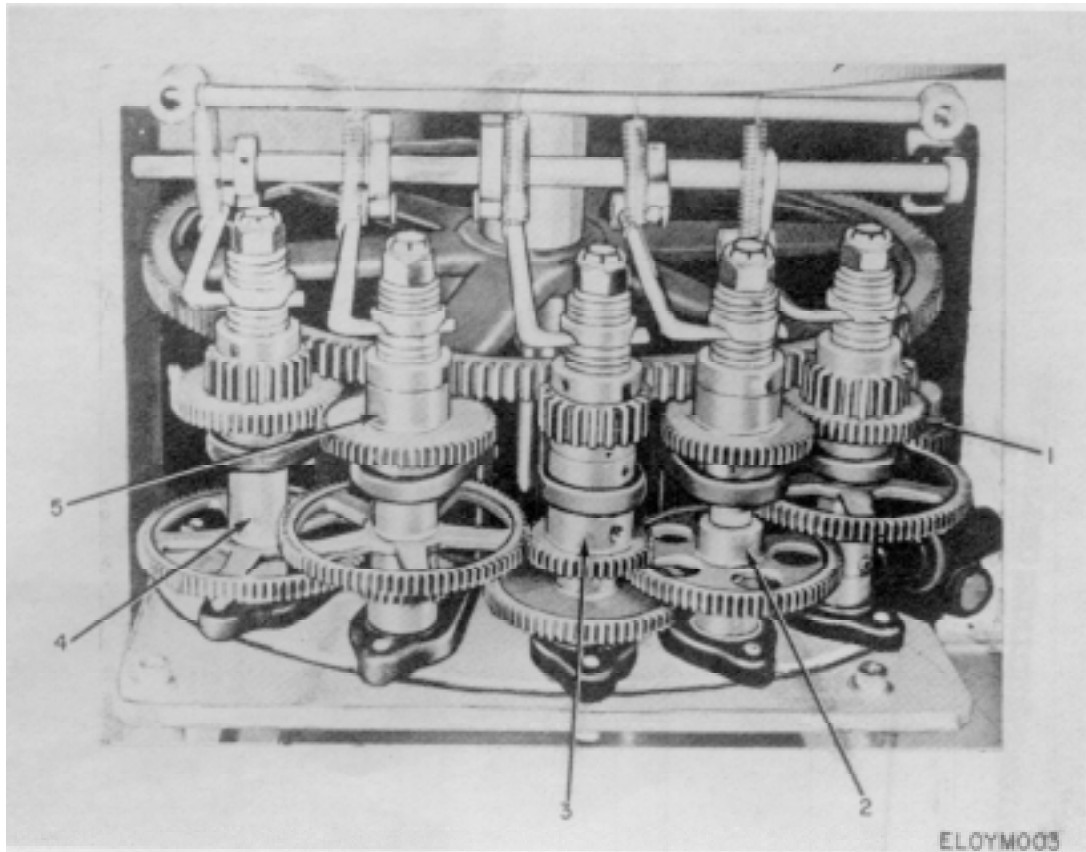


Figure 3. Clutch Components.

(1) ILLUSTRATION		(2)	(3)	(4)	(5)	(6) DESCRIPTION	(7)	(8)
(a) FIG NO.	(b) ITEM NO.	SMR CODE	NATIONAL STOCK NUMBER	PART NUMBER	FSCM	UOC	U/M	QTY INC IN UNIT
						GROUP 0101 CLUTCH COMPONENTS		
3	1	AHHHH		219961-1	30120	GEAR ASSEMBLY A	EA	1
3	2	AHHHH		219961-2	30120	GEAR ASSEMBLY B	EA	1
3	3	AHHHH		219961-3	30120	GEAR ASSEMBLY C	EA	1
3	4	AHHHH		219961-5	30120	GEAR ASSEMBLY E	EA	1
3	5	AHHHH		219961-4	30120	GEAR ASSEMBLY D	EA	1

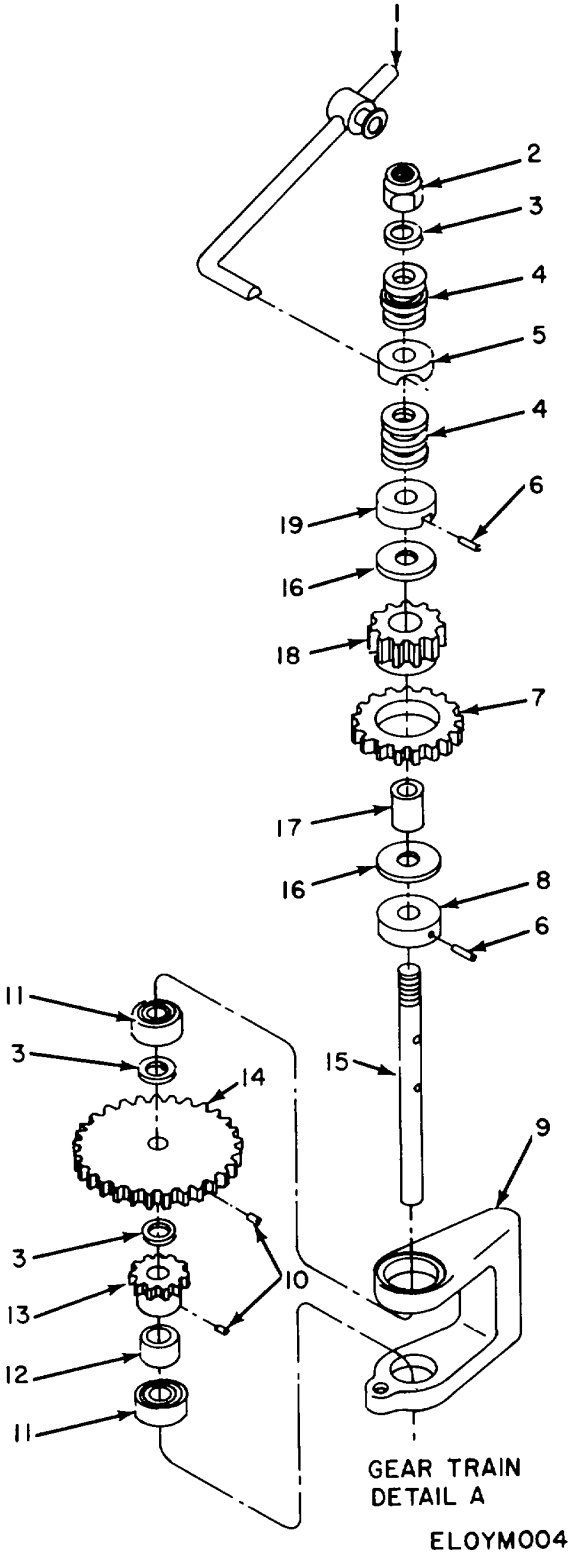


Figure 4. Gear Assembly Detail A.

SECTION II

TM 11-6625-613-40P

(1) ILLUSTRATION		(2)	(3)	(4)	(5)	(6) DESCRIPTION	(7)	(8)
(a) FIG NO.	(b) ITEM NO.	SMR CODE	NATIONAL STOCK NUMBER	PART NUMBER	FSCM	UOC	U/M	QTY INC IN UNIT
GROUP 010101 GEAR- ASSEMBLY DETAIL A								
4	1	XDHZZ		219831	30120	ARM, CLUTCH ACTUATING	EA	1
4	2	XDHZZ		MS20365-524A	96906	NUT	EA	1
4	3	PAHZZ	5310-00-167-0820	AN960-516	88044	WASHER	EA	3
4	4	XDHUZ		A08	71041	BEARING, THRUST	EA	2
4	5	XDHZZ		219828	30120	GUIDE ASSEMBLY	EA	1
4	6	XDHZZ		52-022-094-0500	72962	ROLL PIN	EA	2
4	7	PAHZZ	3020-00-805-3414	212917	30120	GEAR, SPUR	EA	1
4	8	XDHZZ		219833	30120	COLLAR, SHAFT	EA	1
4	9	XDHZZ		211607	30120	HOUSING, GEAR	EA	1
4	10	PAHZZ	5305-00-728-6308	AN5SA1032H3	88044	SETSCREW	EA	2
4	11	PAHZZ	3110-00-033-9851	NS27641-5	96906	BEARING, BALL	EA	2
4	12	XDHZZ		211870-5	30120	SPACER, SLEEVE	EA	1
4	13	XDHZZ		H3224	71041	GEAR, SPUR	EA	1
4	14	XDHZZ		2129L-3	30120	GEAR, SPUR	EA	1
4	15	XDHZZ		219830	30120	SHAFT, REDUCTION	EA	1
4	16	PAHZZ	6625-00-906-6363	29832	30120	DISK, CLUTCH FRICTION	EA	2
4	17	XDHZZ		219834	30120	BEARING, OILITE	EA	1
4	18	XDHZZ		219876	30120	GEAR, SPUR	EA	1
4	19	PAHZZ	6625-00906-6362	219829	30120	DISK, CLUTCH	EA	1

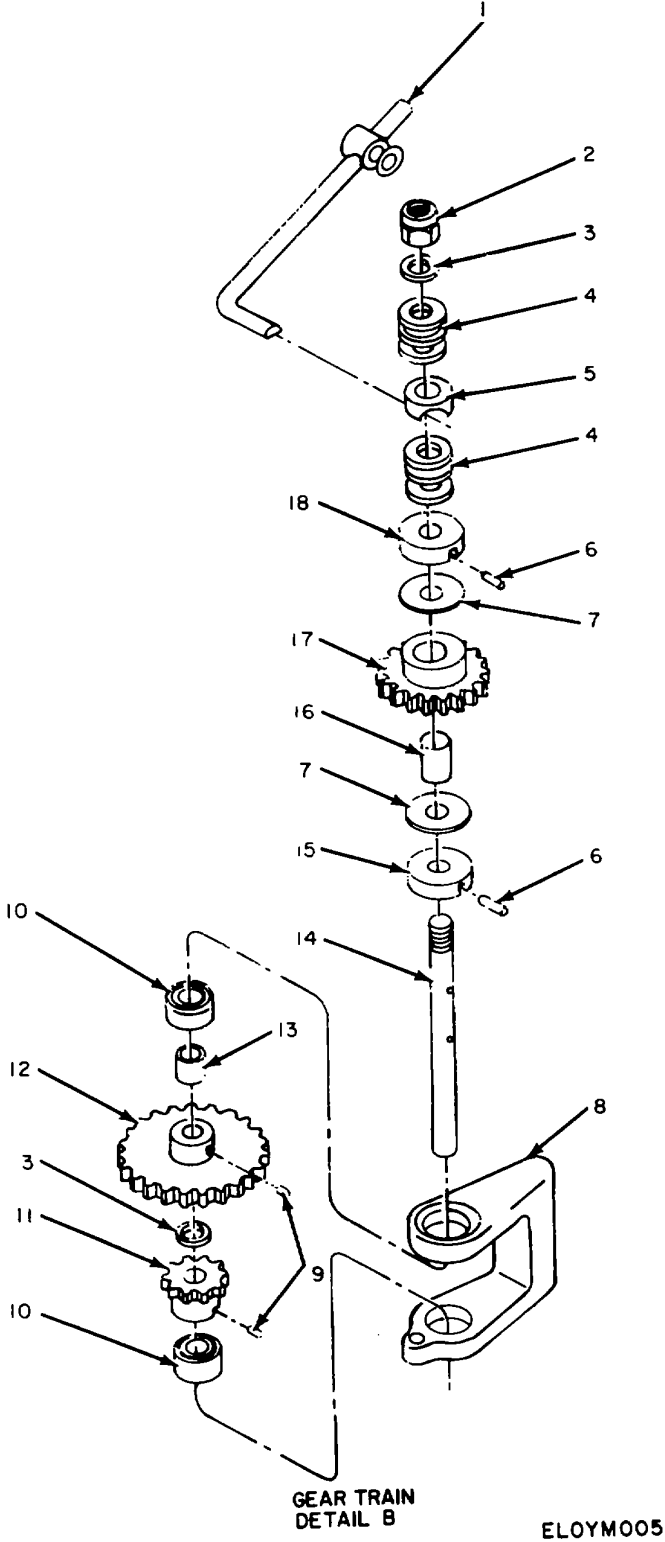


Figure 5. Gear Assembly Detail B.

SECTION II

TM 11-6625-613-40P

(1) ILLUSTRATION		(2)	(3)	(4)	(5)	(6) DESCRIPTION	(7)	(8)
(a) FIG NO.	(b) ITEM NO.	SMR CODE	NATIONAL STOCK NUMBER	PART NUMBER	FSCM	UOC	U/M	QTY INC IN UNIT
GROUP 010102 GEAR ASSEMBLY DETAIL B								
5	1	XDHZZ		219831	30120	ARM, CLUTCH ACTUATING	EA	1
5	2	XDHZZ		MS2365-524A	96906	NUT	EA	1
5	3	PAHZZ	5310-00-167-0820	AN960-516	88044	WASHER	EA	2
5	4	XDHZZ		A08	71041	BEARING, THRUST	EA	2
5	5	XDHZZ		219828	30120	GUIDE ASSEMBLY	EA	1
5	6	XDHZZ		52-022-094-0500	72962	ROLL PIN	EA	2
5	7	PAHZZ	6625-00-906-6363	29832	30120	DISK, CLUTCH FRICTION	EA	2
5	8	XDHZZ		211607	30120	HOUSING, GEAR	EA	1
5	9	PAHZZ	5305-00-128-6308	ANS65A1032H3	88044	SETSCREW	EA	2
5	10	PAHZZ	3110-00-033-9851	MS27641-5	96906	BEARING, BALL	EA	2
5	11	PAHZZ	3020-00-273-1737	H3232	71041	GEAR, SPUR	EA	1
5	12	PAHZZ	3020-00-820-0452	212918-2	30120	GEAR, SPUR	EA	1
5	13	XDHZZ		211869	30120	SPACER, SLEEVE	EA	1
5	14	XDHZZ		219830	30120	SHAFT, REDUCTION	EA	1
5	15	XDHZZ		219833	30120	COLLAR, SHAFT	EA	1
5	16	XDHZZ		219834	30120	BEARING, OILITE	EA	1
5	17	XDHZZ		220-3241	30120	GEAR, SPUR	EA	1
5	18	PAHZZ	6625-00-906-6362	219829	30120	DISK, CLUTCH	EA	1

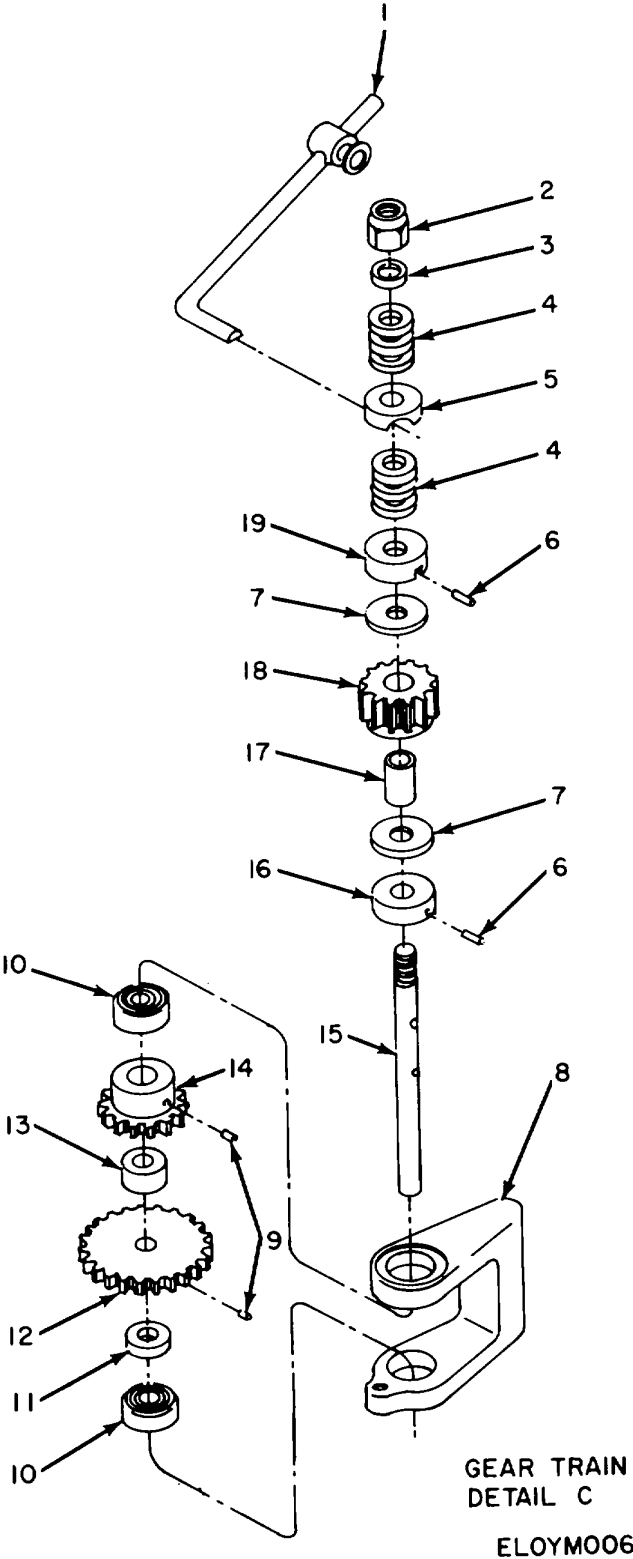


Figure 6. Gear Assembly Detail C.



SECTION II

TM 11-6625-613-40P

(1) ILLUSTRATION		(2)	(3)	(4)	(5)	(6) DESCRIPTION	(7)	(8)
(a) FIG NO.	(b) ITEM NO.	SMR CODE	NATIONAL STOCK NUMBER	PART NUMBER	FSCM	UOC	U/M	QTY INC IN UNIT
						GROUP 010103 GEAR ASSEMBLY DETAIL C		
6	1	XDHZZ		219831	30120	ARM, CLUTCH ACTUATING	EA	1
6	2	XDHZZ		MS20365-524A	96906	NUT	EA	1
6	3	PAHZZ	5310-00-167-0820	AN960-516	88044	WASHER	EA	1
6	4	XDHZZ		A08	71041	BEARING, THRUST	EA	2
6	5	XDHZZ		219828	30120	GUIDE ASSEMBLY	EA	1
6	6	XDHZZ		52-022-094-0500	72962	ROLL PIN	EA	2
6	7	PAHZZ	6625-00-906-6363	219832	30120	DISK, CLUTCH FRICTION	EA	2
6	8	XDHZZ		211607	30120	HOUSING, GEAR	EA	1
6	9	PAHZZ	5305-00-728-6308	AN56SA1032H3	88044	SETSCREW	EA	2
6	10	PAHZZ	3110-00-033-9851	MS27641-5	96906	BEARING, BALL	EA	2
6	11	XDHZZ		211810-2	30120	SPACER, SLEEVE	EA	1
6	12	XDHZZ		212918-1	30120	GEAR, SPUR	EA	1
6	13	XDHZZ		211870-5	30120	SPACER, SLEEVE	EA	1
6	14	XDHZZ		212922	30120	GEAR, SPUR	EA	1
6	15	XDHZZ		219830	30120	SHAFT, REDUCTION	EA	1
6	16	XDHZZ		219833	30120	COLLAR, SHAFT	EA	1
6	17	XDHZZ		219834	30120	BEARING, OILITE	EA	1
6	18	XDHZZ		219876	30120	GEAR, SPUR	EA	1
6	19	PAHZZ	6625-00-906-6362	219829	30120	DISK, CLUTCH	EA	1

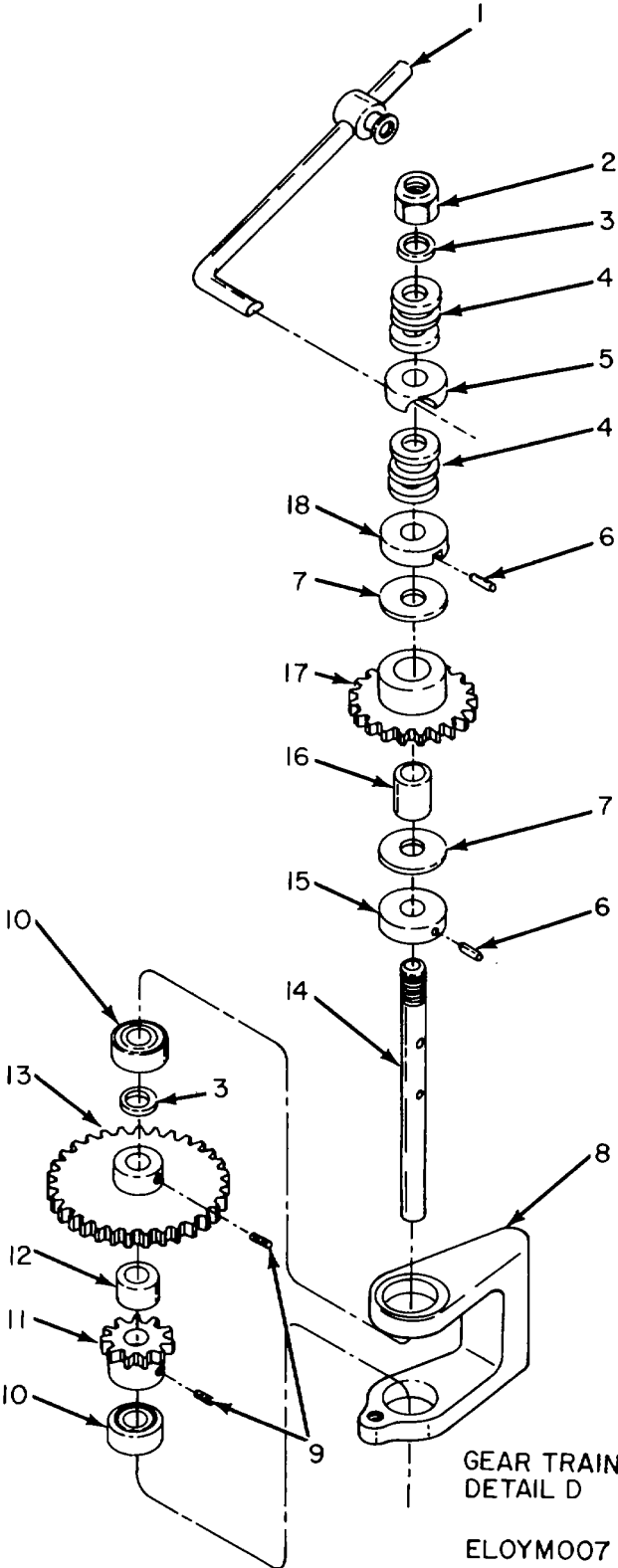


Figure 7. Gear Assembly Detail D.

SECTION II

TM 11-6625-613-40P

(1) ILLUSTRATION		(2)	(3)	(4)	(5)	(6) DESCRIPTION	(7)	(8)
(a) FIG NO.	(b) ITEM NO.	SMR CODE	NATIONAL STOCK NUMBER	PART NUMBER	FSCM	UOC	U/M	QTY INC IN UNIT
						GROUP 010104 GEAR ASSEMBLY DETAIL D		
7	1	XDHZZ		219831	30120	ARM, CLUTCH ACTUATING	EA	1
7	2	XDHZZ		MS20365-524A	96906	NUT	EA	1
7	3	PAHZZ	5310-00-167-0820	AN960-516	88044	WASHER	EA	2
7	4	XDHZZ		A08	71041	BEARING, THRUST	EA	2
7	5	XDHZZ		219828	30120	GUIDE ASSEMBLY	EA	1
7	6	XDHZZ		52-022-09-0500	72962	ROLL PIN	EA	2
7	7	PAHZZ	6625-00-906-6363	219832	30120	DISK, CLUTCH FRICTION	EA	2
7	8	XDHZZ		211607	33120	HOUSING, GEAR	EA	1
7	9	PAHZZ	5305-00-728-6308	AN565A1032H3	88044	SETSCREW	EA	2
7	10	PAHZZ	3110-00-033-9851	MS27641-5	96906	BEARING, BALL	EA	2
7	11	PAHZZ	3020-00-273-1737	H3232	71041	GEAR, SPUR	EA	1
7	12	XDHZZ		211870-5	30120	SPACER, SLEEVE	EA	1
7	13	XDHZZ		212918-3	33120	GEAR, SPUR	EA	1
7	14	XDHZZ		219830	30120	SHAFT, REDUCTION	EA	1
7	15	XDHZZ		219833	30120	COLLAR, SHAFT	EA	1
7	16	XDHZZ		219834	30120	BEARING, OILITE	EA	1
7	17	XOHZZ		219960	30120	GEAR, SPUR	EA	1
7	18	PAHZZ	6625-00-906-6362	219829	30120	DISK, CLUTCH	EA	1

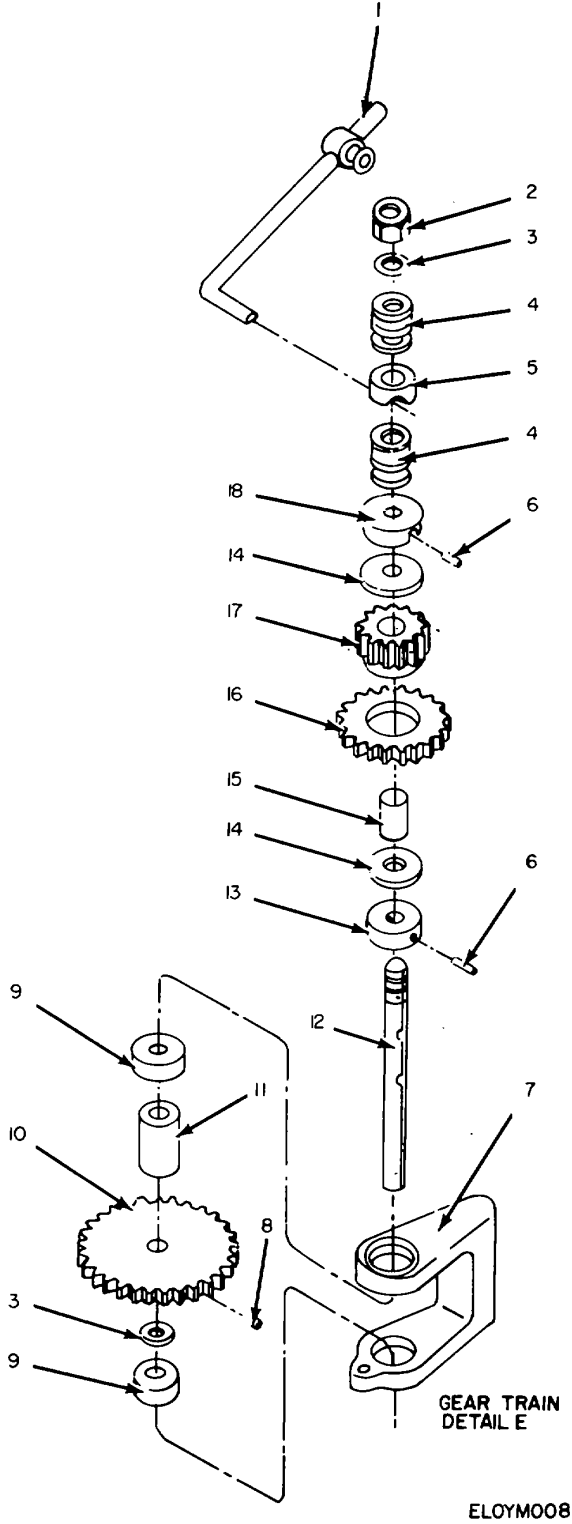
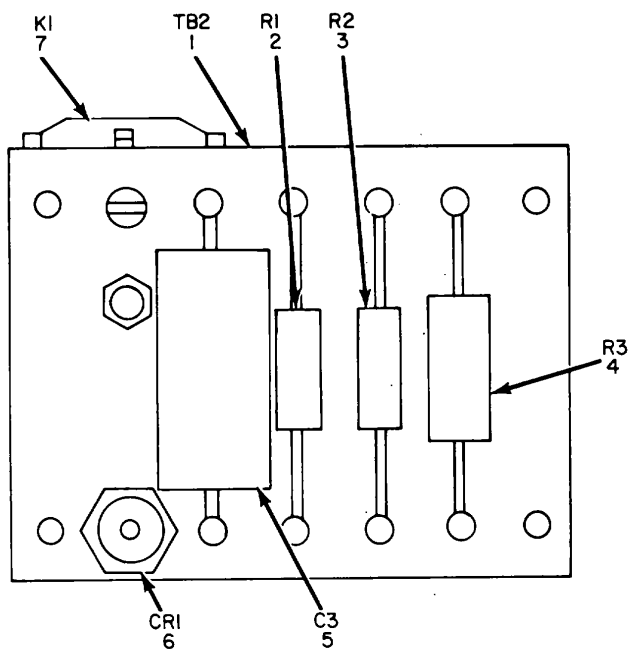


Figure 8. Gear Assembly Detail E.

SECTION II

TM 11-6625-613-40P

(1) ILLUSTRATION		(2)	(3)	(4)	(5)	(6)	(7)	(8)
(a) FIG NO.	(b) ITEM NO.	SMR CODE	NATIONAL STOCK NUMBER	PART NUMBER	FSCM	DESCRIPTION  UOC	U/M	QTY INC IN UNIT
						GROUP 010105 GEAR ASSEMBLY DETAIL E		
8	1	XDHZZ		219831	30120	ARM, CLUTCH ACTUATING	EA	1
8	2	XDHZZ		MS20365-524A	96906	NUT	EA	1
8	3	PAHZZ	5310-00-167-0820	AN960-516	88044	WASHER	EA	2
8	4	XDHZZ		A08	71041	BEARING, THRUST	EA	2
8	5	XDHZZ		219828	30120	GUIDE ASSEMBLY	EA	1
8	6	XDHZZ		520220940500	72962	ROLL PIN	EA	2
8	7	XDHZZ		211607	30120	HOUSING, GEAR	EA	1
8	8	PAHZZ	5305-00-728-6308	AN565A1032H3	88044	SETSCREW	EA	1
8	9	PAHZZ	3110-00-033-9851	NS527641-5	96906	BEARING, BALL	EA	2
8	10	XDHZZ		2129183	30120	GEAR, SPUR	EA	1
8	11	!XDHZZ		21187014	30120	SPACER, SLEEVE	EA	1
8	12	XDHZZ		219830	30120	SHAFT, REDUCTION	EA	1
8	13	XDHZZ		219833	30120	COLLAR, SHAFT	EA	1
8	14	PAHZZ	6625-00-906-6363	219832	30120	DISK, CLUTCH FRICTION	EA	2
8	15	XDHZZ		219834	30120	BEARING, OILITE	EA	1
8	16	XDHZZ		214497	30120	GEAR, SPUR	EA	1
8	17	XDHZZ		219876	30120	GEAR, SPUR	EA	1
8	18	PAHZZ	6625-00-906-6362	219829	30120	DISK, CLUTCH	EA	1



ELOYM009

Figure 9. Dynamic Brake Assembly.

(1) ILLUSTRATION		(2)	(3)	(4)	(5)	(6) DESCRIPTION	(7)	(8)
(a) FIG NO.	(b) ITEM NO.	SMR CODE	NATIONAL STOCK NUMBER	PART NUMBER	FSCM	UOC	U/M	QTY INC IN UNIT
						GROUP 0102 DYNAMIC BRAKE ASSEMBLY		
9	1	XDHZZ		219796	30120	BOARD, TERMINAL	EA	1
9	2	PAHZZ	5905-00-279-2643	RC32GF101J	81349	RESISTOR, FIXED, COMPOSITION	EA	1
9	3	PAHZZ	5905-00-299-2015	RC32GF393J	81349	RESISTOR, FIXED, COMPOSITION	EA	1
9	4	PAHZZ	5905-00-253-1229	RC42GF331J	81349	RESISTOR, FIXED, COMPOSITION	EA	1
9	5	XDHZZ		CP04A1EF104M	56289	CAPACITOR, FIXED, PAPER	EA	1
9	6	PAHZZ	5961-00-808-4741	1N1130	01295	SEMICONDUCTOR DEVICE, DIODE	EA	1
9	7	PAHZZ	5945-00-813-4740	KA5AY	77342	RELAY, ARMATURE	EA	1

## SECTION IV

## NATIONAL STOCK NUMBER AND PART NUMBER INDEX

TM 11-6625-613-40P

**NOTE: LATEST NATIONAL STOCK NUMBER AND PART NUMBER ASSIGNMENTS ARE INCLUDED AT END OF INDEX.**

STOCK NUMBER	FIGURE NO.	ITEM NO.	STOCK NUMBER	FIGURE NO.	ITEM NO.
6150-00-071-1180	2	41	5305-00-728-6308	8	8
5930-00-112-5272	2	32	5910-00-735-0899	2	45
5320-00-117-6820	1	4	5320-00-754-0992	1	22
5320-00-117-6942	1	11			
5310-00-167-0801	1	14	3020-00-805-3414	4	7
5310-00-167-0816	2	16	5961-00-808-4741	9	6
5310-00-167-0818	2	58	5945-00-813-4740	9	7
5310-00-167-0820	4	3	3020-00-820-0452	5	12
5310-00-167-0820	5	3	5940-00-822-4824	2	36
5310-00-167-0820	6	3	6625-00-906-6362	4	19
5310-00-167-0820	7	3	6625-00-906-6362	5	18
5310-00-167-0820	8	3	6625-00-906-6362	6	19
5920-00-199-9498	2	42	6625-00-906-6362	7	18
5930-00-224-2745	2	28	6625-00-906-6362	8	18
5330-00-248-3840	2	63	6625-00-906-6363	4	16
5905-00-253-1229	9	4	6625-00-906-6363	5	7
5305-00-253-5612	1	16	6625-00-906-6363	6	7
5905-00-279-2643	9	2	6625-00-906-6363	7	7
5905-00-299-2015	9	3	6625-00-906-6363	8	14
9905-00-514-7567	2	29	6625-00-906-6364	2	71
5310-00-579-5554	2	6	5910-00-906-6394	2	33
5310-00-584-5272	1	8	6625-00-906-6407	1	19
3020-00-618-9387	2	50	6625-00-906-6408	2	21
5930-00-646-4619	2	11	6625-00-906-6409	2	74
5305-00-728-6308	2	19	6625-00-906-6410	2	60
5305-00-728-6308	4	10	6625-00-906-6411	2	17
5305-00-728-6308	5	9	5826-00-912-9980	2	76
5305-00-728-6308	7	9			

PART NUMBER	FSCM	FIG. NO.	ITEM NO.	PART NUMBER	FSCM	FIG. NO.	ITEM NO.
AN340-2	88044	2	10	MS20365-524A	96906	8	2
AN515-2-10	88044	2	12	MS20365-524A	96906	7	2
AN515-2-3	88044	2	56	MS20426AD3-8	96906	1	11
AN515-6R4	88044	2	15	MS20470AD3-9	96906	1	4
AN515-6R6	88044	2	65	MS20470AD6-7	96906	1	22
AN515-8R6	88044	2	26	MS21318-15	96906	1	16
AN520-IA6	88044	2	39	MS25085-1	96906	2	11
AN520C10R14	88044	1	15	MS29513-112	96906	2	70
AN565A1032H3	88044	2	19	MS29513-14	96906	2	63
AN565A1032H3	88044	4	10	NAS608-3-1	80205	2	48
AN565A1032H2	88044	5	9	NAS608-3-10P	80205	2	59
AN565A1032H3	88044	6	9	NAS608-3-36	80205	2	61
AN565A1032H3	88044	7	9	NAS608-4-12P	80205	2	27
AN565A1032H3	88044	8	8	NAS608-4-16P	80205	2	13
AN8-7A	88044	1	9	NAS608-4-28P	80205	2	62
AN935-816	88044	1	8	NAS608-440-8P	80205	2	8
AN936A2	88044	2	6	NAS608-5-24P	80205	2	80
AN960-10	88044	2	58	NAS608-632-8P	80205	2	35
AN960-26	88044	2	7	NAS608-832-8P	80205	2	78
AN960-516	88044	4	3	RC32GF101J	81349	9	2
AN960-516	88044	5	3	RC32GF3933	81349	9	3
AN960-516	88044	6	3	RC42GF331J	81349	9	4
AN960-516	88044	7	3	R19787	30120	2	60
AN960-6	88044	2	16	SR-7P	28520	2	40
AN960C10	88044	1	14	SSE0500-5	77272	1	5
A08	71041	4	4	VS10203-4	77272	1	20
A08	71041	5	4	1N1130	01295	9	6
A08	71041	6	4				
A08	71041	7	4				
A08	71041	8	4				
A510-1-4-4	95987	2	14	114V3040	77272	1	17
BR200-450	07793	2	44	114V3041-1	77272	1	19
B2770EX30	07827	2	49	114V3041-2	77272	1	13
CP04A1EF104M	56289	9	5	120H-A-SA	94637	1	3
H3224	71041	4	13	120HA-14	94637	1	2
H3232	71041	5	11	120HA12	94637	1	21
H3232	71041	7	11	120H16	94637	1	6
KASAY	77342	9	7	120H16-D	94637	1	18
KP10A	21335	2	66	120H16-1BOT	94637	1	10
KP16A	27737	2	4	120H16-1TOP	94637	1	1
MS20365-424A	96906	5	2	128A2244	93199	2	64
MS20365-524A	96906	6	2	1329	72653	2	29
				1565NS	30120	2	1

## SECTION IV

## NATIONAL STOCK NUMBER AND PART NUMBER INDEX

TM11-6625-613-40P

PART NUMBER	FSCM	FIG. NO.	ITEM NO.	PART NUMBER	FSCM	FIG. NO.	ITEM NO.
1579NS1	30120	2	54	219828	30120	8	5
1579NS2	30120	2	24	219629	30120	4	19
1604-42	97945	2	38	219829	30120	5	18
1714	70903	2	41	219829	30120	6	19
171987	76149	2	45	219829	30120	7	18
19F2052	93199	2	33	219829	30120	8	18
211029-1	30120	2	31	219830	30120	4	15
211557-3	30120	2	77	219830	30120	5	14
211607	30120	4	9	219830	30120	6	15
211607	30120	5	8	219830	30120	7	14
211607	30120	6	8	219830	30120	8	12
211607	30120	7	8	219831	30120	5	1
211607	30120	8	7	219831	30120	6	1
211614	30120	2	22	219831	30120	7	1
211626	30120	2	72	219832	30120	4	16
211627	30120	2	69	219832	30120	5	7
211631-2	30120	2	53	219832	30120	6	7
211632	30120	2	52	219632	30120	1	7
211634-1	30120	2	51	219832	30120	8	14
211745	30120	2	55	219833	30120	a	8
211793	30120	2	57	219833	30120	5	15
211810-2	30120	6	11	219833	30120	6	16
211868	30120	2	50	219833	30120	7	15
211d69	30120	5	13	219833	30120	8	13
211870-5	30120	4	12	219834	30120	4	17
211870-5	30120	6	13	219834	30120	5	16
211870-5	30120	7	12	219834	30120	6	17
21187014	30120	8	11	219834	30120	7	16
212917	30120	4	7	219834	30120	8	15
212918-1	30120	6	12	219876	30120	4	18
212918-2	30120	5	12	219876	30120	6	18
212918-3	30120	4	14	219876	30120	8	17
212918-3	30120	7	13	219881	30120	2	37
2129183	30120	8	10	219950-1	30120	2	3
212922	30120	6	14	219960	30120	7	17
214497	30120	8	16	219961-1	30120	3	1
219551-1	30120	2	71	219961-2	30120	3	2
219773	30120	2	75	219961-3	30120	3	3
219775-2	30120	1	7	219961-4	30120	3	5
219776	30120	2	46	219961-5	30120	3	4
219777	30120	2	47	220-324-1	30120	5	17
219778	30120	2	23	220136	30120	2	30
219779	30120	2	73	221359	30120	2	25
219778	30120	2	68	313.500	75915	2	42
219780	30120	2	5	34200	75915	2	43
219784	30120	2	21	52-022-094-0500	72962	4	6
219786	30120	2	74	52-022-094-0500	72962	5	6
219788	30120	2	18	52-022-094-0500	72962	6	6
219789	30120	2	17	52-022-094-0500	72962	7	6
219792	30120	2	67	S2LHTA521-02	72962	1	12
219793	30120	2	76	520220940500	72962	8	6
219795	30120	2	9	614A625	93199	2	34
219796	30120	9	1	65505	92218	2	20
				719790	30120	2	79
219828	30120	4	5	7612-K2	15605	2	32
219828	30120	5	5	8-541	71785	2	36
219828	30120	6	5	8381-K8	15605	2	28
219828	30120	7	5				



LATEST NATIONAL STOCK NUMBER ASSIGNMENTS

STOCK NUMBER	FIGURE NO.	ITEM NO.	STOCK NUMBER	FIGURE NO.	ITEM NO.
3110-00-027-4028	2	66	3020-00-273-1737	5	11
3110-00-033-9851	4	11	3020-00-273-1737	7	11
3110-00-033-9851	5	10	3010-00-688-5029	2	49
3110-00-033-9851	6	10	5330-00-733-2208	2	70
3110-00-033-9851	7	10	5305-00-880-7730	1	20
3110-00-033-9851	8	9	5305-00-958-6381	2	12
5340-00-200-8637	2	38	3020-00-999-2653	2	67

LATEST PART NUMBER ASSIGNMENTS

PART NUMBER	FSCM	FIG. NO.	ITEM NO.	PART NUMBER	FSCM	FIG. NO.	ITEM NO.
AN960-516	88044	8	3	MS27641-5	96906	7	10
MS20365-524A	96906	4	2	MS27641-5	96906	8	9
MS27641-5	96906	4	11	MS35198-61	96906	2	2
MS27641-5	96906	5	10	219831	30120	4	1
MS27641-5	96906	6	10	219831	30120	8	1

ADDITIONAL LATEST NATIONAL STOCK NUMBER ASSIGNMENTSADDITIONAL LATEST PART NUMBER ASSIGNMENTS

STOCK NUMBER	FIG. NO.	ITEM NO.	PART NUMBER	FSCM	FIG. NO.	ITEM NO.
5305-00-050-9232	1	15	MS35206-202	96906	2	56
5305-00-054-6650	2	15	MS35649-222	96906	2	10
5305-00-054-6652	2	65	MS51957-26	96906	2	15
5305-00-054-6668	2	26	MS51957-28	96906	2	65
5305-00-762-7482	2	56	MS51957-43	96906	2	26
5310-00-934-9738	2	10	MS51957-66	96906	1	15

☆U.S. GOVERNMENT PRINTING OFFICE: 1987 0 - 201-421 (71239)

By Order of the Secretary of the Army:

BERNARD W. ROGERS  
*General, United States Army*  
*Chief of Staff*

Official:

J. C. PENNINGTON  
*Brigadier General, United States Army*  
*The Adjutant General*

DISTRIBUTION:

To be distributed in accordance with DA Form 12-36A, Section II, Direct and General Support requirements for AN/ASM-120.

RECOMMENDED CHANGES TO EQUIPMENT TECHNICAL PUBLICATIONS



THEN... JOT DOWN THE DOPE ABOUT IT ON THIS FORM, CAREFULLY TEAR IT OUT, FOLD IT AND DROP IT IN THE MAIL!

SOMETHING WRONG WITH THIS PUBLICATION?

FROM: (PRINT YOUR UNIT'S COMPLETE ADDRESS)

DATE SENT

PUBLICATION NUMBER

PUBLICATION DATE

PUBLICATION TITLE

BE EXACT... PIN-POINT WHERE IT IS

PAGE NO.	PARA-GRAPH	FIGURE NO.	TABLE NO.

IN THIS SPACE TELL WHAT IS WRONG AND WHAT SHOULD BE DONE ABOUT IT:

TEAR ALONG PERFORATED LINE

PRINTED NAME, GRADE OR TITLE, AND TELEPHONE NUMBER

SIGN HERE:

DA FORM 2028-2  
JUL 79

PREVIOUS EDITIONS ARE OBSOLETE.

P.S.—IF YOUR OUTFIT WANTS TO KNOW ABOUT YOUR RECOMMENDATION MAKE A CARBON COPY OF THIS AND GIVE IT TO YOUR HEADQUARTERS.

**PIN: 020921-000**